



# 330 GC

## Hydraulic Excavator

# Technical Specifications

Configurations and features may vary by region. Please consult your Cat® dealer for availability in your area.

## Table of Contents

<b>Specifications</b> .....	<b>2</b>
Engine .....	2
Swing Mechanism .....	2
Weights .....	2
Track .....	2
Drive .....	2
Hydraulic System .....	2
Service Refill Capacities .....	2
Standards .....	2
Sound Performance .....	2
Operating Weights and Ground Pressures .....	3
Major Component Weights .....	3
Dimensions .....	4
Working Ranges and Forces .....	5
Reach Boom Lift Capacities – Counterweight: 6.7 mt (14,770 lb) .....	6
Mass Boom Lift Capacities – Counterweight: 6.7 mt (14,770 lb) .....	7
Bucket Specifications and Compatibility .....	8
Attachments Offering Guide .....	9
<b>Standard and Optional Equipment</b> .....	<b>10</b>
<b>Dealer Installed Kits and Attachments</b> .....	<b>12</b>

# 330 GC Hydraulic Excavator Specifications

## Engine

Engine Model	Cat® C7.1	
Net Power – ISO 9249	150 kW	201 hp
Engine Power – ISO 14396	151 kW	202 hp
Bore	105 mm	4 in
Stroke	135 mm	5 in
Displacement	7.01 L	428 in <sup>3</sup>
Biodiesel capability	Up to B20 <sup>(1)</sup>	

- Meets U.S. EPA Tier 4 Final, EU Stage V, Korea Tier 4 Final, and Japan 2014 emission standards.
- Recommended for use up to 4500 m (14,760 ft) altitude with engine power derate above 3000 m (9,840 ft).
- Net power is tested per ISO 9249. Standards in effect at the time of manufacture.
- Net power advertised is the power available at the flywheel when the engine is equipped with fan, air intake system, exhaust system and alternator.
- Rated speed at 2,200 rpm.

<sup>(1)</sup>Cat engines are compatible with the following renewable, alternative, and bio-fuels\* with lower greenhouse gas emission impact:

- ✓ Up to B20 biodiesel (FAME)\*\*
- ✓ Up to 100% HVO and GTL renewable fuels

\*Refer to guidelines for successful application. Please consult your Cat dealer or “Caterpillar Machine Fluids Recommendations” (SEBU6250) for details.

\*\*For use of higher blends, consult your Cat dealer.

## Swing Mechanism

Swing Speed	11.50 rpm	
Maximum Swing Torque	105 kN·m	77,370 lb-ft

## Weights

Operating Weight	29 500 kg	65,000 lb
------------------	-----------	-----------

- Long undercarriage, Reach boom, R3.2 m (10'6") stick, HD 1.54 m<sup>3</sup> (2.01 yd<sup>3</sup>) bucket, 600 mm (24") triple grouser shoes and 6700 kg (14,770 lb) counterweight.

## Track

Standard Track Shoes Width	600 mm	24 in
Number of Shoes (each side)	50	
Number of Track Rollers (each side)	9	
Number of Carrier Rollers (each side)	2	

## Drive

Gradeability	35°/70%	
Maximum Travel Speed	5.3 km/h	3.3 mph
Maximum Drawbar Pull	248 kN	55,753 lbf

## Hydraulic System

Main System – Maximum Flow – Implement	560 L/min (280 × 2 pumps)	148 gal/min (74 × 2 pumps)
Maximum Pressure – Equipment	35 000 kPa	5,075 psi
Maximum Pressure – Travel	35 000 kPa	5,075 psi
Maximum Pressure – Swing	28 400 kPa	4,120 psi
Boom Cylinder – Bore	140 mm	6 in
Boom Cylinder – Stroke	1407 mm	55 in
Stick Cylinder – Bore	150 mm	6 in
Stick Cylinder – Stroke	1646 mm	65 in
Bucket Cylinder – Bore	135 mm	5 in
Bucket Cylinder – Stroke	1156 mm	46 in

## Service Refill Capacities

Fuel Tank Capacity	474 L	125.2 gal
Cooling System	25 L	6.6 gal
Engine Oil	25 L	6.6 gal
Swing Drive	10 L	2.6 gal
Final Drive (each)	5.5 L	1.5 gal
Hydraulic System (including tank)	310 L	81.9 gal
Hydraulic Tank	147 L	38.8 gal
DEF Tank	41 L	10.8 gal

## Standards

Brakes	ISO 10265:2008
Cab/ROPS	ISO 12117-2:2008
FOGS (optional)	ISO 10262:1998 Level II

## Sound Performance

ISO 6395:2008 (external)	103 dB(A)
ISO 6396:2008 (inside cab)	70 dB(A)

- Hearing protection may be needed when operating with an open operator station and cab (when not properly maintained or doors/windows open) for extended periods or in a noisy environment.

# 330 GC Hydraulic Excavator Specifications

## Operating Weights and Ground Pressures

	600 mm (24") Triple Grouser Shoes	
	Weight	Ground Pressure
	kg (lb)	kPa (psi)
<b>Base Machine with 6700 kg (14,770 lb) Counterweight and Long Undercarriage</b>		
Reach Boom + R3.2CB2 (10'6") Stick + 1.54 m <sup>3</sup> (2.01 yd <sup>3</sup> ) HD Bucket	29 500 kg (65,000 lb)	56.1 kPa (8.1 psi)
Reach Boom + R2.65CB2 (8'8") Stick + 1.54 m <sup>3</sup> (2.01 yd <sup>3</sup> ) HD Bucket	29 400 kg (64,800 lb)	55.9 kPa (8.1 psi)
Mass Boom + M2.5DB (8'2") Stick + 2.12 m <sup>3</sup> (2.77 yd <sup>3</sup> ) HD Bucket	30 400 kg (67,000 lb)	57.8 kPa (8.4 psi)

All operating weights include a 90% fuel tank with 75 kg (165 lb) operator.

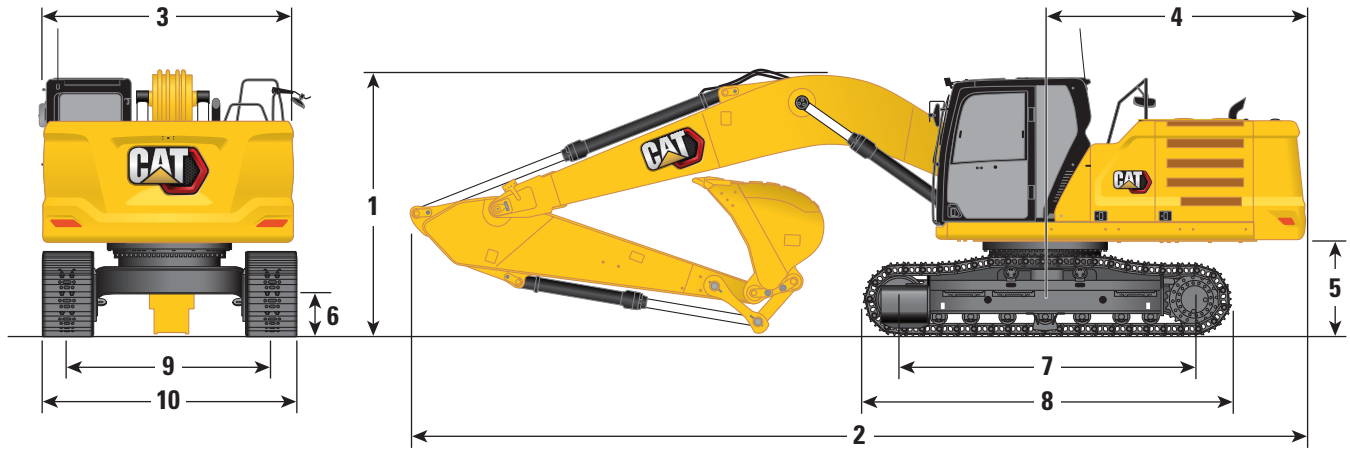
## Major Component Weights

	kg	lb
Base machine (with 6700 kg [14,770 lb] counterweight, upper frame, long undercarriage with HD rollers and two boom cylinders) – weight of 90% fuel tank and 75 kg (165 lb) operator not included.	20 580	45,400
Track Shoes:		
600 mm (24") Width, 11 mm (0.43") Thick, Triple Grouser Track Shoes	3620	8,000
Two Boom Cylinders	490	1,100
Weight of 90% Fuel Tank and 75 kg (165 lb) Operator	460	1,000
Counterweight:		
6700 kg (14,770 lb) Counterweight	6700	14,800
Booms (including lines, pins, stick cylinder):		
Reach Boom 6.15 m (20'2")	2300	5,100
Mass Boom 5.55 m (18'2")	2380	5,200
Sticks (including lines, pins, bucket cylinder, bucket linkage):		
Reach Stick R3.2CB2 (10'6")	1440	3,200
Reach Stick R2.65CB2 (8'8")	1350	3,000
Mass Stick M2.5DB (8'2")	1640	3,600
Buckets (without linkage, with tips and side cutters):		
1.54 m <sup>3</sup> (2.01 yd <sup>3</sup> ) HD, CB Linkage	1130	2,500
2.12 m <sup>3</sup> (2.77 yd <sup>3</sup> ) HD, DB Linkage	1690	3,700
Quick Couplers:		
Pin Grabber QC CB with pins	530	1,200
Pin Grabber QC CB without pins	500	1,100
Dedicated QC	430	900

# 330 GC Hydraulic Excavator Specifications

## Dimensions

All dimensions are approximate and may vary depending on bucket selection.

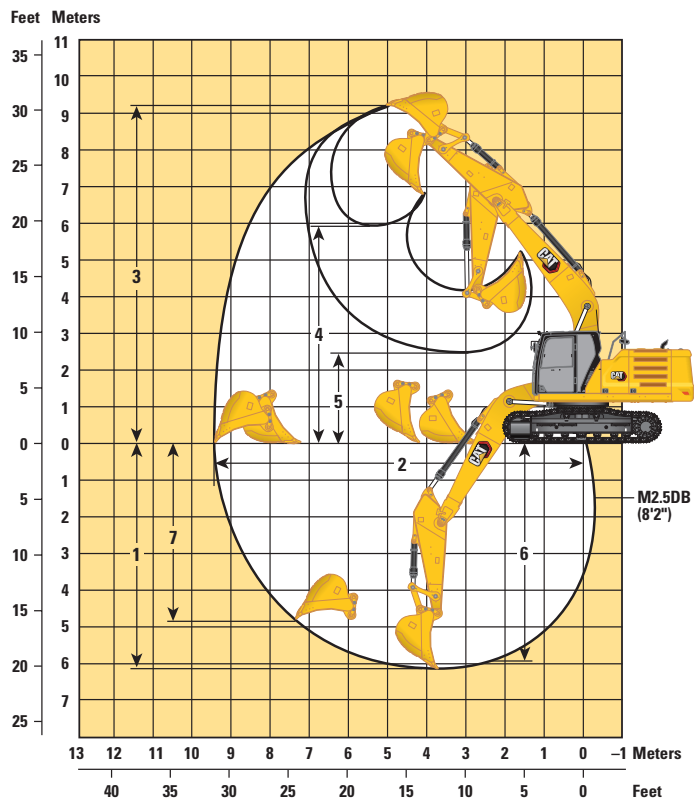
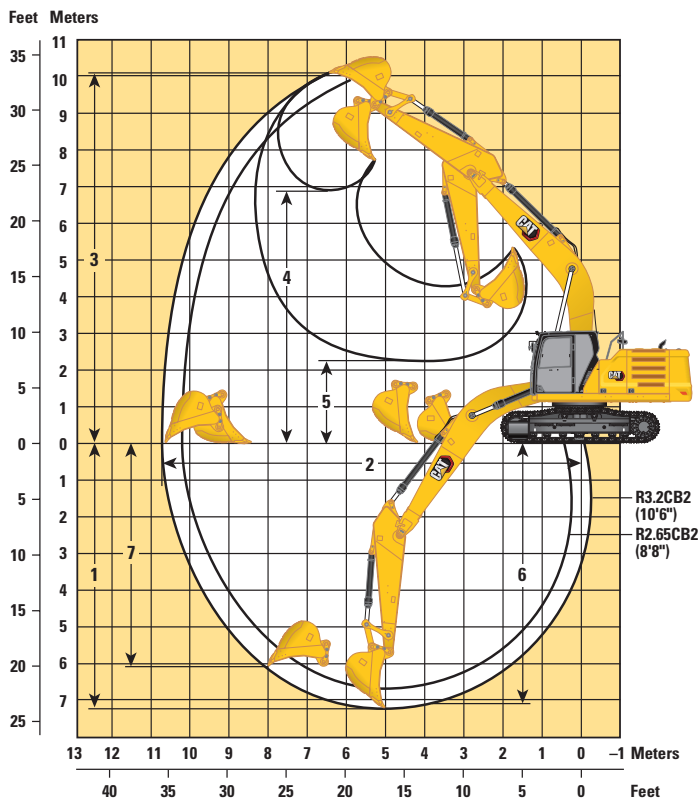


Boom Options	Reach Boom 6.15 m (20'2")				Mass Boom 5.55 m (18'2")	
	Reach Stick R3.2CB2 (10'6")		Reach Stick R2.65CB2 (8'8")		Mass Stick M2.5DB (8'2")	
<b>1 Machine Height:</b>						
Cab Height	3050 mm	10'0"	3050 mm	10'0"	3050 mm	10'0"
FOGS Height	3190 mm	10'6"	3190 mm	10'6"	3190 mm	10'6"
Handrails Height	3050 mm	10'0"	3050 mm	10'0"	3050 mm	10'0"
With Boom/Stick/Bucket Installed	3400 mm	11'2"	3450 mm	11'4"	3520 mm	11'7"
With Boom/Stick Installed	3380 mm	11'1"	3380 mm	11'1"	3430 mm	11'3"
With Boom Installed	3050 mm	10'0"	3050 mm	10'0"	3050 mm	10'0"
<b>2 Machine Length:</b>						
With Boom/Stick/Bucket Installed	10 420 mm	34'2"	10 420 mm	34'2"	9870 mm	32'5"
With Boom/Stick Installed	10 420 mm	34'2"	10 420 mm	34'2"	9850 mm	32'4"
With Boom Installed	9230 mm	30'3"	9230 mm	30'3"	8600 mm	28'3"
<b>3 Upperframe Width without Walkways</b>	2940 mm	9'8"	2940 mm	9'8"	2940 mm	9'8"
<b>4 Tail Swing Radius</b>	3130 mm	10'3"	3130 mm	10'3"	3130 mm	10'3"
<b>5 Counterweight Clearance</b>	1110 mm	3'8"	1110 mm	3'8"	1110 mm	3'8"
<b>6 Ground Clearance</b>	490 mm	1'7"	490 mm	1'7"	490 mm	1'7"
<b>7 Length to Center of Rollers</b>	3990 mm	13'1"	3990 mm	13'1"	3990 mm	13'1"
<b>8 Track Length</b>	4860 mm	15'11"	4860 mm	15'11"	4860 mm	15'11"
<b>9 Track Gauge</b>	2590 mm	8'6"	2590 mm	8'6"	2590 mm	8'6"
<b>10 Undercarriage Width:</b>						
600 mm (24") Shoes	3190 mm	10'6"	3190 mm	10'6"	3190 mm	10'6"
Bucket Type	HD		HD		HD	
Bucket Capacity	1.56 m <sup>3</sup>	2.04 yd <sup>3</sup>	1.56 m <sup>3</sup>	2.04 yd <sup>3</sup>	2.12 m <sup>3</sup>	2.77 yd <sup>3</sup>
Bucket Tip Radius	1658 mm	5'5"	1658 mm	5'5"	1796 mm	5'11"

# 330 GC Hydraulic Excavator Specifications

## Working Ranges and Forces

All dimensions are approximate and may vary depending on bucket selection.



### Boom Options

#### Reach Boom 6.15 m (20'2")

#### Mass Boom 5.55 m (18'2")

### Stick Options

#### Reach Stick R3.2CB2 (10'6")

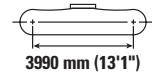
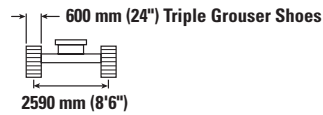
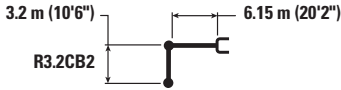
#### Reach Stick R2.65CB2 (8'8")

#### Mass Stick M2.5DB (8'2")

1 Maximum Digging Depth	7260 mm	23'10"	6710 mm	22'0"	6150 mm	20'2"
2 Maximum Reach at Ground Line	10 690 mm	35'1"	10 210 mm	33'6"	9480 mm	31'1"
3 Maximum Cutting Height	10 020 mm	32'10"	9910 mm	32'6"	9250 mm	30'4"
4 Maximum Loading Height	6940 mm	22'9"	6790 mm	22'3"	5950 mm	19'6"
5 Minimum Loading Height	2280 mm	7'6"	2830 mm	9'3"	2420 mm	7'11"
6 Maximum Depth Cut for 2440 mm (8 ft) Level Bottom	7100 mm	23'4"	6530 mm	21'5"	5960 mm	19'7"
7 Maximum Vertical Wall Digging Depth	6030 mm	19'9"	5720 mm	18'9"	4860 mm	15'11"
Bucket Digging Force (ISO)	179 kN	40,240 lbf	179 kN	40,240 lbf	211 kN	47,430 lbf
Stick Digging Force (ISO)	126 kN	28,330 lbf	145 kN	32,600 lbf	153 kN	34,400 lbf
Bucket Type	HD		HD		HD	
Bucket Capacity	1.56 m <sup>3</sup>	2.04 yd <sup>3</sup>	1.56 m <sup>3</sup>	2.04 yd <sup>3</sup>	2.12 m <sup>3</sup>	2.77 yd <sup>3</sup>
Bucket Tip Radius	1658 mm	5'5"	1658 mm	5'5"	1796 mm	5'11"

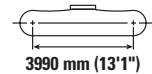
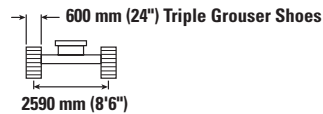
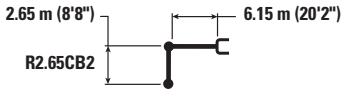
# 330 GC Hydraulic Excavator Specifications

## Reach Boom Lift Capacities – Counterweight: 6.7 mt (14,770 lb) – without Bucket



		1500 mm/60 in		3000 mm/120 in		4500 mm/180 in		6000 mm/240 in		7500 mm/300 in		9000 mm/360 in		mm in		
7500 mm 300 in	kg lb													*5150 *11,350	*5150 *11,350	7270 290
6000 mm 240 in	kg lb								*7200 *15,300	6250 13,450				*4900 *10,750	*4900 *10,750	8230 330
4500 mm 180 in	kg lb							*8400 *18,250	*8400 *18,250	*7600 *16,600	6150 13,200			*4850 *10,650	4750 10,550	8830 350
3000 mm 120 in	kg lb					*12 950 *27,850	12 550 27,000	*9800 *21,250	8250 17,750	*8300 *18,050	5950 12,850	*5950 4550		*5000 *10,950	4450 9,800	9140 360
1500 mm 60 in	kg lb					*15 450 *33,350	11 850 25,500	*11 150 *24,150	7900 17,000	8950 19,200	5800 12,450	*6800 *12,550	4450 9,600	*5300 *11,650	4350 9,550	9190 370
0 mm 0 in	kg lb					*16 600 *35,950	11 500 24,700	*12 050 *26,050	7650 16,500	8800 18,900	5650 12,150			*5850 *12,800	4400 9,700	8990 360
-1500 mm -60 in	kg lb	*6350 *14,200	*6350 *14,200	*10 000 *22,700	*10 000 *22,700	*16 600 *35,950	11 400 24,500	12 150 26,050	7550 16,250	8700 18,750	5600 12,000			*6750 *14,850	4750 10,400	8530 340
-3000 mm -120 in	kg lb	*11 450 *25,650	*11 450 *25,650	*16 150 *36,750	*16 150 *36,750	*15 600 *33,700	11 450 24,650	*11 700 *25,300	7550 16,300	8750 18,850	5600 12,150			8400 18,550	5400 11,950	7740 310
-4500 mm -180 in	kg lb			*18 050 *38,850	*18 050 *38,850	*13 250 *28,450	11 700 25,150	*9800 *20,750	7750 16,700					*8600 *18,900	6950 15,550	6520 260

## Reach Boom Lift Capacities – Counterweight: 6.7 mt (14,770 lb) – without Bucket



		3000 mm/120 in		4500 mm/180 in		6000 mm/240 in		7500 mm/300 in		mm in		
7500 mm 300 in	kg lb					*17,450	*17,450			*6700 *14,900	*6700 *14,900	6670 260
6000 mm 240 in	kg lb					*8150 *17,750	*8150 *17,750	*7650 *14,350	6200 13,250	*6300 *13,950	5950 13,200	7700 300
4500 mm 180 in	kg lb			*11 200 *24,000	*11 200 *24,000	*9100 *19,750	8500 18,350	*8150 *17,800	6100 13,150	*6250 *13,750	5200 11,450	8340 330
3000 mm 120 in	kg lb			*14 100 *30,300	12 300 26,550	*10 450 *22,600	8150 17,600	*8750 *19,050	5950 12,800	*6400 *14,050	4800 10,600	8660 340
1500 mm 60 in	kg lb			*15 600 *35,000	11 750 25,250	*11 650 *25,150	7850 16,950	8950 19,200	5800 12,450	*6800 *14,900	4700 10,350	8720 350
0 mm 0 in	kg lb			*16 550 *36,450	11 500 24,750	12 250 26,400	7650 16,550	8800 18,900	5700 12,250	7350 16,200	4800 10,600	8510 340
-1500 mm -60 in	kg lb	*9750 *22,250	*9750 *22,250	*16 350 *35,500	11 500 24,700	12 200 26,200	7600 16,400	8800 18,900	5650 12,200	8000 17,650	5200 11,450	8020 320
-3000 mm -120 in	kg lb	*18 300 *41,700	*18 300 *41,700	*14 950 *32,300	11 600 24,950	*11 350 *24,400	7650 16,550			*8900 *19,600	6100 13,500	7180 290
-4500 mm -180 in	kg lb	*15 700	*15 700	*11 900 *25,400	11 900 *25,400					*8650 *19,000	8250 18,550	5830 230



ISO 10567



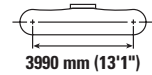
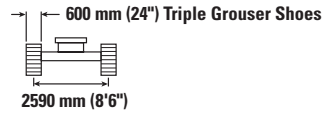
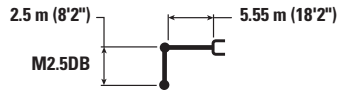
\* Indicates that the load is limited by hydraulic lifting capacity rather than tipping load. The above loads are in compliance with hydraulic excavator lift capacity standard ISO 10567:2007. They do not exceed 87% of hydraulic lifting capacity or 75% of tipping load. Weight of all lifting accessories must be deducted from the above lifting capacities. Lifting capacities are based on the machine standing on a firm, uniform supporting surface. The use of a work tool attachment point to handle/lift objects, could affect the machine lift performance.

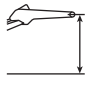


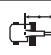

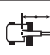

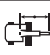




Lift capacity stays with ±5% for all available track shoes.

Always refer to the appropriate Operation and Maintenance Manual for specific product information.

# 330 GC Hydraulic Excavator Specifications

## Mass Boom Lift Capacities – Counterweight: 6.7 mt (14,770 lb) – without Bucket



	3000 mm/120 in		4500 mm/180 in		6000 mm/240 in		7500 mm/300 in				mm in	
												
7500 mm 300 in	kg lb									*7900 *17,550	*7900 *17,550	5500 220
6000 mm 240 in	kg lb				*8750 *19,250	8650 18,550				*7350 *16,200	7200 16,050	6720 270
4500 mm 180 in	kg lb			*11 150 *24,000	*11 150 *24,000	*9450 *20,500	8400 18,100			*7300 *16,050	6000 13,350	7440 300
3000 mm 120 in	kg lb			*13 800 *29,700	12 400 26,700	*10 550 *22,900	8100 17,450	9000 19,300	5800 12,500	*7600 *16,650	5500 12,100	7810 310
1500 mm 60 in	kg lb			*15 950 *34,400	11 750 25,300	*11 650 *25,250	7800 16,750	8850 19,000	5700 12,250	8250 *18,100	5300 11,700	7870 310
0 mm 0 in	kg lb			*16 700 *36,150	11 450 24,650	12 200 26,250	7600 16,350	8750 18,800	5600 12,050	8500 18,750	5450 12,000	7640 300
-1500 mm -60 in	kg lb	*16 300 *37,150	*16 300 *37,150	*16 100 *34,900	11 400 24,550	*11 950 *25,850	7550 16,250			9500 21,000	6050 13,350	7080 280
-3000 mm -120 in	kg lb	*19 200 *41,500	*19 200 *41,500	*14 100 *30,350	11 550 24,900	*10 150 7650				*9850 *21,700	7500 16,700	6110 240



ISO 10567



\* Indicates that the load is limited by hydraulic lifting capacity rather than tipping load. The above loads are in compliance with hydraulic excavator lift capacity standard ISO 10567:2007. They do not exceed 87% of hydraulic lifting capacity or 75% of tipping load. Weight of all lifting accessories must be deducted from the above lifting capacities. Lifting capacities are based on the machine standing on a firm, uniform supporting surface. The use of a work tool attachment point to handle/lift objects, could affect the machine lift performance.

Lift capacity stays with ±5% for all available track shoes.

Always refer to the appropriate Operation and Maintenance Manual for specific product information.

# 330 GC Hydraulic Excavator Specifications

## Bucket Specifications and Compatibility

	Linkage	Width		Capacity		Weight		Fill	6.7 mt (14,770 lb) Counterweight		
		mm	in	m <sup>3</sup>	yd <sup>3</sup>	kg	lb		Reach Boom		Mass Boom
									R3.2 (10'6")	R2.65 (8'8")	M2.5 (8'2")
<b>Pin-On (No Quick Coupler)</b>											
Heavy Duty	CB	1450	57	1.60	2.09	1274	2,809	100	●	●	
	CB	1650	66	1.90	2.49	1369	3,019	100	X	X	
	CB	1750	69	2.00	2.62	1397	3,081	100	X	X	
Heavy Duty	CB	1250	49	1.33	1.74	1158	2,554	100	●	●	
	CB	1400	55	1.54	2.02	1263	2,784	100	●	●	
	CB	1500	60	1.76	2.30	1391	3,067	100	⊙	●	
Heavy Duty	DB	1500	61	1.88	2.46	1633	3,601	100			●
	DB	1650	67	2.12	2.77	1731	3,817	100			⊙
Extreme Duty	DB	1400	56	1.64	2.14	1892	4,171	90			●
Maximum load with pin-on (payload + bucket)								kg	4580	5015	5785
								lb	10,097	11,056	12,754
<b>With Pin Grabber Quick Coupler</b>											
Heavy Duty	CB	1450	57	1.60	2.09	1274	2,809	100	⊙	●	
	CB	1650	66	1.90	2.49	1369	3,019	100	○	⊖	
	CB	1750	69	2.00	2.62	1397	3,081	100	○	⊖	
Heavy Duty	CB	1250	49	1.33	1.74	1158	2,554	100	●	●	
	CB	1400	55	1.54	2.02	1263	2,784	100	⊙	●	
	CB	1500	60	1.76	2.30	1391	3,067	100	⊖	⊙	
Heavy Duty	DB	1500	61	1.88	2.46	1633	3,601	100			⊙
	DB	1650	67	2.12	2.77	1731	3,817	100			⊖
Extreme Duty	DB	1400	56	1.64	2.14	1892	4,171	90			●
Maximum load with coupler (payload + bucket)								kg	4054	4489	5259
								lb	8,937	9,896	11,594

The above loads are in compliance with hydraulic excavator standard EN474-5:2006 + A3:2013, they do not exceed 87% of hydraulic lifting capacity or 75% of tipping capacity with front linkage fully extended at ground line with bucket curled.

Capacity based on ISO 7451:2007.

Bucket weight with General Duty tips.

### Maximum Material Density:

- 2100 kg/m<sup>3</sup> (3,500 lb/yd<sup>3</sup>)
- ⊙ 1800 kg/m<sup>3</sup> (3,000 lb/yd<sup>3</sup>)
- ⊖ 1500 kg/m<sup>3</sup> (2,500 lb/yd<sup>3</sup>)
- 1200 kg/m<sup>3</sup> (2,000 lb/yd<sup>3</sup>)
- X Not Recommended

Caterpillar recommends using appropriate work tools to maximize the value customers receive from our products. Use of work tools, including buckets, which are outside of Caterpillar's recommendations or specifications for weight, dimensions, flows, pressures, etc. may result in less-than-optimal performance, including but not limited to reductions in production, stability, reliability, and component durability. Improper use of a work tool resulting in sweeping, prying, twisting and/or catching of heavy loads will reduce the life of the boom and stick.



# 330 GC Hydraulic Excavator Specifications

## Attachments Offering Guide

Not all Attachments are available in all regions. Consult your Cat dealer for configurations available in your region.

Match

No Match

### PIN-ON ATTACHMENTS

Counterweight		6.7 mt (14,770 lb)		
Boom Types		Reach		Mass Excavation
Stick Lengths		2.65 m (8'8")	3.2 m (10'6")	2.5 m (8'2")
Hydraulic Hammers	H130 GC	✓	✓	✓
	H130 GC S	✓	✓	✓
	H140 GC	✓	✓	✓
	H140 GC S	✓	✓	✓
	H160 GC	✓	✓	✓
	H160 GC S	✓	✓	✓

# 330 GC Standard and Optional Equipment

## Standard and Optional Equipment

Standard and optional equipment may vary. Consult your Cat dealer for details.

	Standard	Optional		Standard	Optional
<b>CAB</b>			<b>ENGINE</b>		
ROPS, standard sound suppression	✓		Two selectable modes: Power, Smart	✓	
High-resolution 203 mm (8") LCD touchscreen monitor	✓		Automatic engine speed control	✓	
Automatic bi-level air conditioner	✓		Auto engine idle-shutdown	✓	
Jog dial and shortcut keys for monitor control	✓		4500 m (14,760 ft) altitude capability with engine power derate above 3000 m (9,840 ft)	✓	
Keyless push-to-start engine control	✓		52° C (125° F) high-ambient cooling capability without derate	✓	
Height-adjustable console, three steps with tool	✓		-18° C (0° F) cold start capability	✓	
Fixed left-side console	✓		-32° C (-25° F) cold start capability		✓
Mechanically adjustable seat suspension	✓		Cold start block heaters		✓
51 mm (2") orange seat belt	✓		2 × 115 amp dual alternator	✓	
Bluetooth® integrated radio (no USB, aux port or microphone)	✓		Sealed double element air filter with integrated precleaner	✓	
12V DC outlets	✓		Two-stage fuel filtration with water separator and indicator	✓	
Document storage	✓		Electric fuel priming pump	✓	
Cup and bottle holders	✓		Electric cooling fans with auto-reverse function	✓	
Coat hook	✓		<b>HYDRAULIC SYSTEM</b>		
Openable two-piece front window	✓		Electronic main control valve	✓	
Upper radial wiper with washer	✓		Electric boom regeneration circuit	✓	
Openable steel hatch	✓		Stick regeneration circuit	✓	
LED dome light	✓		Automatic warm up	✓	
Roller front sunscreen	✓		Automatic two-speed travel	✓	
Roller rear sunscreen		✓	Boom and stick drift reduction valve	✓	
Rear window emergency exit	✓		High performance hydraulic return filter	✓	
Washable floor mat	✓		Final drive with bio hydraulic oil capable travel motor	✓	
Beacon ready	✓		Fine swing control		✓
<b>CAT TECHNOLOGY</b>			Hammer return filter	✓	
Cat Product Link™	✓		Tool Control (two pump, one/two way high-pressure flow)	✓	
Auto hammer stop	✓		Medium-pressure circuit		✓
			Common Quick Coupler Circuit for Cat Pin Grabber and CW Dedicated		✓

(continued on next page)

## Standard and Optional Equipment *(continued)*

Standard and optional equipment may vary. Consult your Cat dealer for details.

	Standard	Optional		Standard	Optional
<b>BOOMS, STICKS AND LINKAGES</b>			<b>SERVICE AND MAINTENANCE</b>		
6.15 m (20'2") Reach boom		✓	Grouped location of engine oil and fuel filters	✓	
5.55 m (18'2") Mass boom		✓	Ground-level second dipstick for engine oil	✓	
3.2 m (10'6") Reach stick, CB2 Linkage		✓	Side entry to service platform	✓	
2.65 m (8'8") Reach stick, CB2 Linkage		✓	Scheduled Oil Sampling (S·O·S <sup>SM</sup> ) ports	✓	
2.5 m (8'2") Mass stick, DB Linkage		✓	Preventative maintenance ready (QuickEvac <sup>TM</sup> )		✓
Bucket linkage, CB family with lifting eye		✓	Electric refueling pump with automatic shutoff		✓
Bucket linkage, DB family with lifting eye		✓	Radiator screen		✓
<b>UNDERCARRIAGE AND STRUCTURES</b>			<b>SAFETY AND SECURITY</b>		
Segmented track guiding guard	✓		Rearview camera	✓	
Bottom guard		✓	Right-hand-side view camera	✓	
HD bottom guard		✓	Cat PL161 Attachment Locator		✓
Travel motor guard	✓		Secure start with PIN code	✓	
Grease lubricated track	✓		Caterpillar One Key security system	✓	
Base frame with HD rollers	✓		Lockable external tool/storage box	✓	
Tie-down points on base frame	✓		Lockable door, fuel, and hydraulic tank locks	✓	
6700 kg (14,770 lb) counterweight	✓		Lockable fuel drain compartment	✓	
600 mm (24") triple grouser track shoes	✓		Service platform with anti-skid plate and recessed bolts	✓	
<b>ELECTRICAL SYSTEM</b>			RH handrail and hand hold (ISO 2867:2011 compliant)	✓	
Maintenance-free 1,000 CCA batteries (×2)	✓		Cab mirror for RH track edge	✓	
Programmable time-delay LED working lights	✓		Signaling/warning horn	✓	
Centralized electrical disconnect switch	✓		Ground-level secondary engine shutoff switch in cab	✓	
LED chassis light, left-side boom light	✓		Hydraulic lock out lever that neutralizes all controls	✓	
LED cab lights, right-side boom light		✓	Travel alarm		✓

# 330 GC Attachments

## Dealer Installed Kits and Attachments

Attachments may vary. Consult your Cat dealer for details.

### CAB

- RH electrical pedal (two-way) for tool control
- Radial lower wiper for two piece (70/30) windshield, with washer
- Rain protector plus cab light cover
- Polycarbonate roof hatch
- P5A laminated glass front windshield and roof hatch (for EU demolition regulation)

### SAFETY AND SECURITY

- 76 mm (3") retractable seat belt
- Bluetooth receiver

### GUARDS

- Side rubber bumper guard
- Swivel guard
- HD swivel guard
- Falling object guard system (not compatible with cab light cover, rain protector)
- Mesh guard full front (not compatible with cab light cover, rain protector)
- Full protecting vandalism guard (not compatible with cab light cover, rain protector)
- Vandalism guard

### ELECTRICAL

- Jump start wiring

### SERVICE AND MAINTENANCE

- Grease gun holder

For more complete information on Cat products, dealer services, and industry solutions, visit us on the web at [www.cat.com](http://www.cat.com)

© 2021 Caterpillar  
All rights reserved

Materials and specifications are subject to change without notice. Featured machines in photos may include additional equipment. See your Cat dealer for available options.

CAT, CATERPILLAR, LET'S DO THE WORK, their respective logos, "Caterpillar Corporate Yellow," the "Power Edge" and Cat "Modern Hex" trade dress as well as corporate and product identity used herein, are trademarks of Caterpillar and may not be used without permission.

AEXJ0084-03 (09-2021)  
Replaces AEXJ0084-02  
Build Number: 07D  
(Korea)

