

SPECIFICATION

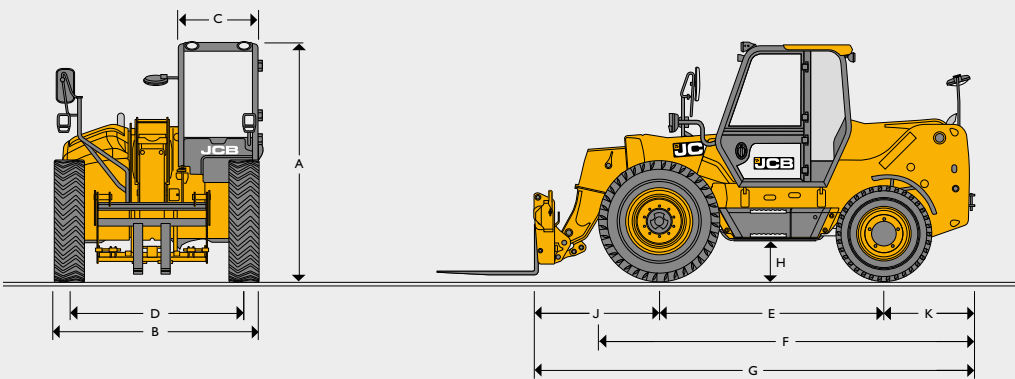


JCB LOADALL | 530-70

Gross power: 56kW (76hp) | Lift capacity: 3000kg | Lift height: 7m



STATIC DIMENSIONS

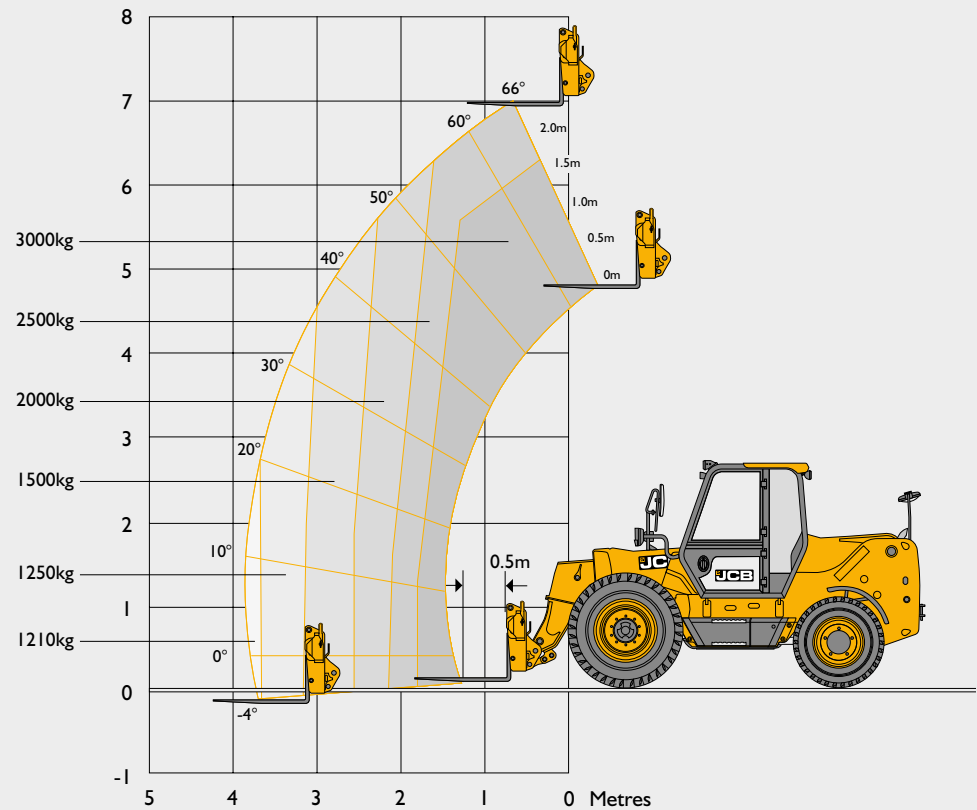


STATIC DIMENSIONS

A	Overall height	m	2.62
B	Overall width (over tyres)*	m	2.36
C	Inside width of cab	m	0.79
D	Front track	m	1.99
E	Wheelbase	m	2.54
F	Overall length to front tyres	m	4.13
G	Overall length to front carriage	m	4.92
H	Ground clearance	m	0.39
J	Front wheel centre to carriage	m	1.42
K	Rear wheel centre to rear face	m	0.95
	Outside turn radius (over tyres)	m	4.85
	Operating weight (with GP shovel)	kg	7260
	Operating weight (with forks)	kg	7154

* Type dependent

LIFT PERFORMANCE



LIFT PERFORMANCE

Maximum lift capacity	kg	3000
Lift capacity to full height	kg	2500
Lift capacity at full reach	kg	1250
Lift height	m	7.0
Reach at maximum lift height	m	1.0
Maximum forward reach	m	3.83
Reach with 1 tonne load	m	3.83
Maximum placing height	m	6.3
Maximum dump height	m	5.8
Shovel roll-back angle (at full height)	degrees	37
Shovel dump angle (at full height)	degrees	44

ENGINE		
Manufacturer		JCB DieselMAX 448
Displacement	litres	4.8
No of cylinders		4
Aspiration		Naturally aspirated
Gross power @ 2200rpm	kW (hp)	56 (76)
Max. torque @ 1100rpm	Nm (kgm)	310 (31.6)
Reversible cooling fan (1 cycle at 20 mins interval). Pre-cleaner (Turbo III). Spark arrestor in exhaust system.		

TRANSMISSION	
JCB Synchro Shuttle with torque converter (ratio 3.01:1). 4 speed. Maximum travel speed 30kph. Selectable 2/4 Wheel Drive disconnect. Transmission disconnect button (on hydraulic levers). Forwards/neutral/reverse shuttle (steering column mounted).	
Front and rear drive axles: JCB MaxTrack torque proportioning differential.	
Front: JCB Drive axle - rigid mounted.	
Rear: JCB Steer and Drive axle - centrally pivoted with oscillating of 16 degrees.	

STEERING	
Rear wheel hydrostatic power steering with manual override.	
Turning radius: 4.85 metres. Maximum steering angle: +/- 48 degrees.	

BRAKES	
Service brakes: Hydraulically actuated, self adjusting, in-board, oil-immersed, multi-disc type in the front axle. Independent Brake Pedals allow Independent & Combined Braking.	
Parking brake: Hand operated disc brake, on output of gearbox.	

WHEELS & TYRES	
Front: BKT (14 x 25 - 20PR) HD Tyre SLR 664. Industrial pattern loader grip. 20PR Ply rating. Tubeless.	
Rear: BKT (11 X 20 - 16PR) SLR 516. Industrial pattern. 16PR Ply rating. Tubeless.	

HYDRAULICS		
Operating system pressure	bar	245
Main hydraulics	l/min	103
Pump	l/min	2 section gear pump.
Loader controls		Mechanical lever - Loading Pattern
Hydraulic cycle times		Seconds
Boom raise		9.9
Boom lower		7.9
Extend		5.9
Retract		3.7
Bucket dump		3.4
Bucket crowd		2.8

External sight gauge. Single auxiliary at boom nose with quick release couplings.

ELECTRICAL SYSTEM		
System	Volt	12
Alternator output	Amp hour	130
Full road lighting. Front and rear cab-mounted work lights. Removable battery isolator key.		

SERVICE CAPACITIES		
Fuel tank	litres	110
Hydraulic tank	litres	110
Engine coolant	litres	16.5
Engine oil	litres	14.2
Transmission oil	litres	17
Front axle oil	litres	21
Rear axle oil	litres	11

CAB	
Fully glazed cabin with standard trim. Vinyl adjustable seat with seat belt. Split stable door. Sun blinds - front screen and roof window. Face level fans. 12 Volt charge socket.	
ROPS (Roll Over Protection System) conforms to ISO 3471. FOPS (Falling Object Protection System) conforms to ISO 3449.	

INSTRUMENTS	
Engine speed. Engine hours. Fuel level. Water temperature. Load Moment Indicator (LMI). Inclinator.	

OTHER	
Lockable toolbox under seat and under cab. Fire extinguisher. Road lighting with adjustable rear light arms. Recovery hitch.	

LIVELINK	
JCB LiveLink is an advanced telematics system enabling you to monitor and manage your machines remotely with information provided on: machine hours, location positioning and movement, routine maintenance information, diagnostic alerts and service warnings.	

CARRIAGE	
JCB Loadall Q-fit with integrated floating forks on bar.	

ATTACHMENTS	
Floating forks and bar, Q-fit mounted. Crane hook (fork mounted). 1.2m ³ General Purpose shovel (2375mm wide) with bolt on toeplate.	



ONE COMPANY, OVER 300 MACHINES.

Your nearest JCB dealer

JCB LOADALL 530-70

Gross power: 56kW (76hp) Lift capacity: 3000kg Lift height: 7m

JCB Sales Asia Pacific Pte Ltd, 50 Collyer Quay, OUE Bayfront, #04-04 Singapore 049321.

Tel: +65 6690 4222 Email: enquiries.asia@jcb.com

Download the very latest information on this product range at www.jcb.com

©2021 JCB Sales. All rights reserved. No part of this publication may be reproduced, stored in a retrieval system, or transmitted in any form or by any other means, electronic, mechanical, photocopying or otherwise, without prior permission from JCB Sales. All references in this publication to operating weights, sizes, capacities and other performance measurements are provided for guidance only and may vary dependant upon the exact specification of machine. They should not therefore be relied upon in relation to suitability for a particular application. Guidance and advice should always be sought from your JCB Dealer. JCB reserves the right to change specifications without notice. Illustrations and specifications shown may include optional equipment and accessories. All images are correct at time of print. The JCB logo is a registered trademark of J C Bamford Excavators Ltd.

28808 en-GB Issue 1 (BS111)

